



Stanford
M E D I C I N E | Radiology



LEADERSHIP

Leadership Overview

The Department of Radiology has experienced substantial growth in the clinical, educational, and research efforts over the past 5 years. This growth, a product of the outstanding work of hundreds of brilliant individuals, has created yet new opportunities, driving further growth. This growth has created a number of challenges, requiring rethinking of the organization and leadership of the Department.

Over the 2017 academic year, the leaders of the Department of Radiology embarked on a nearly year long effort to consider new potential organizational designs. A number of changes were decided upon and enacted in early 2018. The major changes are as follows:

- Two vice chair positions have been added: Vice Chair for Research and Administration and Vice Chair for Education and Clinical Operations.
- Several new Associate Chair roles were created and filled.
- The research and clinical division chiefs now report to the respective vice chairs. The exception is that the Chief of the Division of Interventional Radiology still reports directly to the Chair.
- The research, clinical, and educational associate chairs now report to the respective vice chairs.
- Medical directors have been named for each modality, who partner with their respective modality managers at SHC.

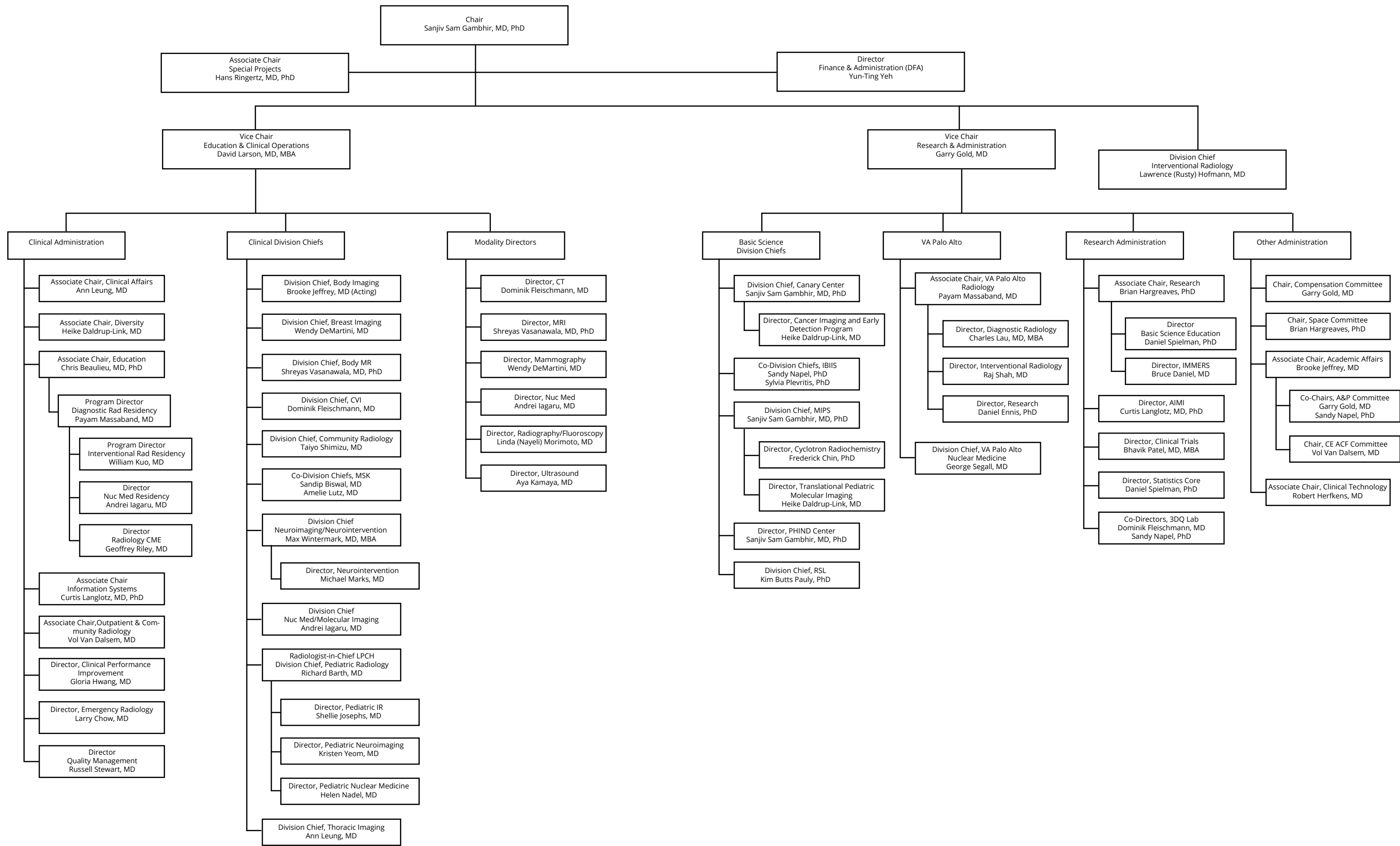
Please recognize that the Department reorganization is and will continue to be a work in progress as we grow and evolve. I am grateful for all the input in redesigning the Department structure and for those who have taken on new or modified leadership roles. Please feel free to reach out to me at any time for any questions, concerns, or additional feedback.



A handwritten signature in black ink that reads "Sanjiv Sam Gambhir". The signature is written in a cursive, flowing style.

Sanjiv Sam Gambhir, MD, PhD

Virginia and D.K. Ludwig Professor in Cancer Research
Chair, Department of Radiology



Stanford Radiology Leadership



SANJIV SAM GAMBHIR, MD, PHD
The Virginia and D.K. Ludwig
Professor in Cancer Research
Professor of Radiology
(650) 725-2309
sgambhir@

CHAIR, DEPARTMENT OF RADIOLOGY

Dr. Sam Gambhir, the Virginia and D.K. Ludwig Professor of Cancer Research, joined Stanford on August 1, 2003, and has been the Chair of the Department of Radiology since 2011. As Chair of the Department, Dr. Sam Gambhir facilitates the long-range strategy and development of the Department within the context of the School of Medicine and University vision, mission, and goals. He works with faculty, staff, and hospital and university leadership to guide the Department's growth for teaching, research, and clinical service. Additionally, Dr. Sam Gambhir serves as Director of the Molecular Imaging Program at Stanford (MIPS), the Canary Center at Stanford for Cancer Early Detection, and directs the new Center for Precision Health and Integrated Diagnostics (PHIND).



YUN-TING YEH, MBA
(650) 724-5566
ytyeh@

DIRECTOR, FINANCE AND ADMINISTRATION (DFA) DEPARTMENT OF RADIOLOGY

The Director of Finance and Administration is responsible for working closely with the Chair of Radiology (Dr. Sam Gambhir) and Vice Chairs (Dr. Garry Gold and Dr. David Larson), in order to achieve strategic growth in the Department's clinical, educational, and research missions.



DAVID LARSON, MD, MBA
Associate Professor of Radiology
(650) 725-9404
david.larson@

VICE CHAIR EDUCATION AND CLINICAL OPERATIONS

The Vice Chair of Education and Clinical Operations oversees and supports the clinical operational and educational missions of the Department. This includes oversight of the Clinical Division chiefs, Associate Chairs and Directors, and Modality Directors. He engages with referring clinicians to understand their needs and ensure they are consistently met. He also engages with SHC leadership regarding Departmental strategy and operations. He also works closely with the Chair and the Associate Chair of Clinical Affairs (Dr. Ann Leung) to plan for clinical faculty staffing needs. Working with the Associate Chair of Education (Dr. Chris Beaulieu) and the Division Chiefs, he helps ensure the educational mission of the Department is appropriately balanced with clinical service requirements.



GARRY GOLD, MD
Professor of Radiology
(650) 724-0361
gold@

VICE CHAIR RESEARCH AND ADMINISTRATION

The Vice Chair of Research and Administration oversees and supports the basic science research efforts and oversees administrative functions such as faculty affairs. He also supervises and supports the Associate Chair of Research (Dr. Brian Hargreaves), who oversees and coordinates educational efforts for research personnel, including Director of Basic Science Education (Dr. Daniel Spielman). This includes developing and supporting programs to increase collaboration among the research divisions and between clinical divisions.



HANS RINGERTZ, MD, PHD
Adjunct Professor of Radiology
(650) 725-0272
ringertz@

ASSOCIATE CHAIR SPECIAL PROJECTS

The Associate Chair of Special Projects carries out special projects as assigned by the Chair (Dr. Sam Gambhir). At the current time, Dr. Ringertz is working closely with Pediatric Radiology and other Clinical Divisions

Clinical Leadership

CLINICAL ADMINISTRATION



ANN LEUNG, MD
Professor of Radiology
(650) 725-0541
aleung@

Associate Chair, Clinical Affairs

The Associate Chair of Clinical Affairs oversees the credentialing process for faculty who practice radiology and nuclear medicine at Stanford Hospital and Clinics and teleradiology at ValleyCare Hospital. Her office is responsible for coordinating and scheduling coverage for the majority of the Department's Clinical Divisions. The Associate Chair of Clinical Affairs ensures that clinical services are adequately staffed, both on a day-to-day basis as well as at a strategic level, anticipating and planning for Department growth. She also works closely with the Vice Chair for Education and Clinical Operations (Dr. Sanjiv Sam Gambhir) in engaging with Hospital leadership regarding Departmental clinical activities.



HEIKE DALDRUP-LINK, MD
Professor of Radiology
(650)723-8996
heiked@

Associate Chair, Diversity

The Associate Chair for Diversity facilitates efforts to improve and maintain diversity in the Department, especially focusing on support for growth and mentoring at the faculty, trainee, and staff levels. She also works with the Dean's office to develop diversity initiatives in the Department.



CHRISTOPHER BEAULIEU, MD, PHD
Professor of Radiology
(650) 725-8018
beaulieu@

Associate Chair, Education

The Associate Chair of Education is responsible for promoting excellence in clinical education and training in the Department. This includes medical student education, diagnostic, interventional, and nuclear medicine residency training programs, fellowship programs, and continuing medical education (CME).



PAYAM MASSABAND, MD
Clinical Associate
Professor of Radiology
(650) 493-5000
payam@

Director, Radiology Residency Program

The Director of Radiology Residency is responsible for all radiology residency related matters, including recruitment, education, promotion, and compliance.

Director, IR Residency Program



WILLIAM KUO, MD
Professor of Radiology
(650) 498-6022
wkuo@

Director, Dual Pathway Nuclear Medicine and Diagnostic Radiology Residency Program



ANDREI IAGARU, MD
Associate Professor of Radiology
(650) 725-4711
aiagaru@

Director, Radiology CME and Community Radiology



GEOFFREY RILEY, MD
Clinical Associate
Professor of Radiology
(925) 324-4004
geoffreyriley@

CLINICAL ADMINISTRATION (continued)



CURTIS LANGLOTZ, MD, PHD
Professor of Radiology
(650) 498-4797
langlotz@

Associate Chair, Information Systems

The Associate Chair of Information Systems works closely with SHC Information Technology (IT) leaders to ensure the effective and reliable function of clinical IT systems in the Department, including PACS, RIS, voice recognition, and other imaging-related clinical IT systems. He also leads strategic and tactical efforts in planning, purchasing, and implementing new IT systems.



**VOLNEY (VOL)
VAN DALSEM, MD**
Clinical Professor
of Radiology
(650) 721-3952
vandal3@

Associate Chair, Outpatient Imaging

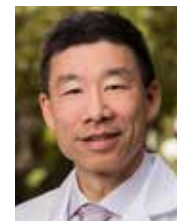
The Associate Chair of Outpatient Imaging oversees outpatient Diagnostic Radiology imaging at Stanford Health Care (SHC). This includes participating in the planning, implementation, and management of the Stanford Medicine Imaging Center, Stanford Medicine Outpatient Center (SMOC), Cancer Center South Bay, Neuroscience Building, and Stanford Health Care Emeryville. The Associate Chair focuses on increasing outpatient imaging volume, exploring new and expanded outpatient imaging services, improving report turnaround time, and nurturing department relationships with Stanford faculty and community physicians.



GLORIA HWANG, MD
Clinical Associate
Professor of Radiology
(650) 723-0728
glhwang@

Director, Clinical Performance Improvement

The Director of Clinical Performance Improvement works closely with the Director of Quality Management (Dr. Russell Stewart) to lead quality improvement in the Department. Specifically, she leads clinical performance improvement efforts as they are related to clinical practice quality, safety, efficiency, and service. She also leads the Department's Performance Improvement Committee and Professional Practice Evaluation Committee and works closely with Committee representatives and division chiefs to support division-specific improvement efforts.



LAWRENCE CHOW, MD
Clinical Associate
Professor of Radiology
(650) 498-6040
lchow@

Director, Emergency Radiology

The Director of Emergency Radiology oversees the acquisition and interpretation of imaging exams performed after hours and emergency exams performed at all hours. He works collaboratively with his counterparts in the Emergency Department to understand and meet the needs of referring clinicians and patients undergoing emergent care. He also works closely with division chiefs, fellowship directors, residency program directors, chief residents, fellow representatives, and hospital administration to ensure that emergency studies are performed and interpreted in a consistently safe, high-quality, and timely manner.



RUSSELL STEWART, MD, MBA
Clinical Assistant
Professor of Radiology
(650) 498-6000
rstewart@

Director, Quality Management

The Director of Quality Management works closely with the Director of Clinical Performance Improvement (Dr. Gloria Hwang) to lead quality improvement in the Department. Specifically, he provides medical direction to the Imaging Services' Quality Improvement (QI) team and works closely with the Imaging Services leadership team in developing and implementing shared quality and safety goals throughout the Department. He also works closely with division leaders and modality directors to ensure quality, safety, efficiency, service, and regulatory compliance in image acquisition.

CLINICAL DIVISION CHIEFS

Clinical Division Chiefs are responsible for the clinical, educational, and research activities of their respective division. Clinical activities include managing imaging protocols, ensuring appropriate staffing of clinical services, managing patient-related issues, ensuring clinical quality, and engaging with relevant referring clinicians in addressing their clinical needs. Educational activities include resident and fellowship training, didactic education, and relevant medical student education. Research activities include grant submissions, basic science and clinical research activities, and publication of research. Division Chiefs cultivate a supportive environment of mentoring and growth in their junior and mid-level faculty. They also work collaboratively with Department and hospital leaders, referring clinicians, and other division chiefs to ensure consistent excellence in all Departmental clinical activities.

ADULT RADIOLOGY DIVISIONS

Division Chief, Body Imaging (Acting)



BROOKE JEFFREY, MD
Professor of Radiology
(650) 723-8310
bjeffrey@

Division Chief, Body MRI



SHREYAS VASANA WALA, MD, PHD
Professor of Radiology
(650) 724-9824
vasanawala@

Division Chief, Breast Imaging



WENDY DEMARTINI, MD
Professor of Radiology
(650) 723-8462
wdemarti@

Division Chief, Cardiovascular Imaging



DOMINIK FLEISCHMANN, MD
Professor of Radiology
(650) 723-7647
d.fleischmann@

Division Chief, Community Radiology



TAIYO SHIMIZU, MD
Clinical Assistant
Professor of Radiology
(650) 416-3540
shimizu1@

Division Chief, Interventional Radiology



LAWRENCE HOFMANN, MD
Professor of Radiology
(650) 736-6096
lhofmann@

Co-Division Chief, Musculoskeletal Imaging



SANDIP BISWAL, MD
Associate Professor of
Radiology
(650) 498-4561
biswals@

Co-Division Chief, Musculoskeletal Imaging



AMELIE LUTZ, MD
Assistant Professor of
Radiology
(650) 721-2862
alutz@

Division Chief, Neuroimaging



MAX WINTERMARK, MD, MBA
Professor of Radiology
(650) 723-7426
mwinterm@

Division Chief, Nuclear Medicine and Molecular Imaging



ANDREI IAGARU, MD
Associate Professor of
Radiology
(650) 725-4711
aiagaru@

Division Chief, Thoracic Imaging



ANN LEUNG, MD
Professor of Radiology
(650) 725-0541
aleung@

Division Chief, Neurointervention



MICHAEL MARKS, MD
Professor of Radiology
(650) 725-6344
m.marks@

RADIOLOGIST-IN-CHIEF, LUCILE PACKARD CHILDREN'S HOSPITAL (LPCH)



RICHARD BARTH, MD
Professor of Radiology
(650) 725-2548
rabarth@

Associate Chair Radiologist-in-Chief Lucile Packard Children's Hospital (LPCH)

The Associate Chair Radiologist-in-Chief provides medical direction to support excellent pediatric and obstetrical patient care in the LPCH and SHC Departments of Radiology through collaboration with LPCH physician leadership, LPCH Radiology Medical Directors, Academic Department Vice Chairs and Division Chiefs, and pediatric radiology faculty. This includes ensuring patient and referring physician satisfaction. He also provides oversight for research activities involving the Clinical Department and oversees the educational experience of trainees through collaboration with the program director.



SHELLIE JOSEPHS, MD
Clinical Professor
of Radiology
(650) 736-7763
sjosephs@

Director, Pediatric Interventional Radiology

The Director of Pediatric Interventional Radiology provides medical direction for all clinical operations related to pediatric interventional radiology and coordinates operations in a collaborative fashion with other Medical Directors in the LPCH Department of Radiology. Responsibilities include: oversight for the quality and safety of the pediatric interventional radiology program, ensuring high patient and referring physician satisfaction, supervision of pediatric interventional radiology faculty, and ensuring a high-quality educational experience for trainees.



HELEN NADEL, MD
Clinical Professor
of Radiology
(650) 721-5083
hnadel@

Director, Pediatric Nuclear Medicine

The Director of Pediatric Nuclear Medicine provides medical direction for all clinical operations related to pediatric nuclear medicine and coordinates operations in a collaborative fashion with other Medical Directors in the LPCH Department of Radiology. Responsibilities include: oversight for the quality and safety of the pediatric nuclear medicine program, ensuring patient and referring physician satisfaction, supervision of other faculty covering pediatric nuclear medicine, and ensuring a high-quality educational experience for trainees.



KRISTEN YEOM, MD
Associate Professor
of Radiology
(650) 721-2388
kyeom@

Interim Director, Pediatric Neuroimaging

The Interim Director of Pediatric Neuroimaging provides medical direction for all clinical operations related to pediatric neuroradiology and coordinates care in a collaborative fashion with other Medical Directors in the LPCH Department of Radiology. Responsibilities include: oversight for the quality and safety of the pediatric neuroradiology program, ensuring high patient and referring physician satisfaction, supervision of neuroradiology faculty, and ensuring a high quality educational experience for trainees. She also serves as the Associate Director of Pediatric MRI.

MODALITY DIRECTORS

Each modality is overseen through a partnership between the Radiologist Modality Director and the Modality Management Team. Modality Directors work collaboratively with his or her hospital partner to ensure safe and effective image acquisition, including safety programs, application of protocols, and certification and other regulatory compliance efforts. Modality Directors coordinate their efforts with Radiology Division Chiefs and their designees, the Chair, Vice Chairs, relevant Associate Chairs and their designees, and other radiologists in building consensus and ensuring cohesive communication between radiologists and technical, administrative, and other hospital leaders and staff. Modality Directors also work closely with the Associate Chair of Clinical Technology (Dr. Bob Herfkens) to help plan, select, purchase, and install new equipment in their respective areas.

Director, Computed Tomography (CT)



DOMINIK FLEISCHMANN, MD
Professor of Radiology
(650) 723-7647
d.fleischmann@

Director, MR / Director of Pediatric MRI



SHREYAS VASANAWALA, MD, PHD
Professor of Radiology
(650) 724-9824
vasanawala@

Director, Mammography



WENDY DEMARTINI, MD
Professor of Radiology
(650) 723-8462
wdemarti@

Director, Nuclear Medicine



ANDREI IAGARU, MD
Associate Professor of
Radiology
(650) 725-4711
aiagaru@

Director, Radiography/Fluoroscopy



**LINDA (NAYELI)
MORIMOTO, MD**
Clinical Assistant
Professor of Radiology
(650) 723-8463
aldrete@

Director, Ultrasound



AYA KAMAYA, MD
Associate Professor of
Radiology
(650) 723-8463
kamaya@

CLINICAL FELLOWSHIP PROGRAM DIRECTORS

The Clinical Fellowship Program Directors report to the Associate Chair of Education (Dr. Christopher Beaulieu). The Department's clinical fellowships are carefully designed to advance the knowledge and technical skills of fellows in subspecialty areas through extensive clinical, research, and teaching opportunities, and to prepare them for leadership positions in clinical practice.

Director, Body Imaging Fellowship Program



AYA KAMAYA, MD
Associate Professor of
Radiology
(650) 723-8463
kamaya@

Director, Body MRI Fellowship Program



BRUCE DANIEL, MD
Professor of Radiology
(650) 725-1812
bdaniel@

Director, Breast Imaging Fellowship Program



DEBRA IKEDA, MD
Professor of Radiology
(650) 723-8462
debra.ikeda@

Director, CV Imaging Fellowship Program



FRANDICS CHAN, MD, PHD
Associate Professor of
Radiology
(650) 723-7647
frandics@

Director, IR Fellowship Program



WILLIAM KUO, MD
Professor of Radiology
(650) 498-6022
wkuo@

Director, MSK Imaging Fellowship Program



SANDIP BISWAL, MD
Associate Professor of
Radiology
(650) 498-4561
biswals@

Director, Neuroimaging Fellowship Program



NANCY FISCHBEIN, MD
Professor of Radiology
(650) 725-6765
fischbein@

Director, Neurointervention Fellowship Program



JEREMY HEIT, MD, PHD
Clinical Assistant
Professor of Radiology
(650) 723-7426
jheit@

Director, Pediatric Radiology Fellowship Program



ERIKA RUBESOVA, MD
Clinical Associate
Professor of Radiology
(650) 721-2848
rubesova@

Director, Neurointervention Fellowship Program



ANN LEUNG, MD
Professor of Radiology
(650) 725-0541
aleung@

RESIDENCY PROGRAM DIRECTORS



PAYAM MASSABAND, MD
Clinical Associate
Professor of Radiology
(650) 493-5000
payam@

Director, Residency Program

The Residency Program Directors report to the Associate Chair of Education (Dr. Christopher Beaulieu). The goal of the residency program is to develop and refine the broad capabilities necessary to become outstanding radiologists who are able to manage diverse patient cases with a broad range of disorders and diseases, with the highest ethical and professional standards of radiologic and medical care.

**Associate Director,
Research Residency Program**

BRUCE DANIEL, MD
Professor of Radiology
(650) 725-1812
bdaniel@

**Associate Director,
Residency Program**

GLORIA HWANG, MD
Clinical Associate
Professor of Radiology
(650) 723-0728
glhwang@

**Associate Director,
Neuroimaging Residency
Program**

MICHAEL IV, MD
Clinical Assistant
Professor of Radiology
(650) 725-5384
miv@

**Associate Director,
Residency Program**

ERIKA RUBESOVA, MD
Clinical Associate
Professor of Radiology
(650) 721-2848
rubesova@

**Director,
IR Residency Program**

WILLIAM KUO, MD
Professor of Radiology
(650) 498-6022
wkuo@

**Director, Dual Pathway Nuclear
Medicine and Diagnostic
Radiology Residency Program**

ANDREI IAGARU, MD
Associate Professor of
Radiology
(650) 725-4711
aiagaru@

Research Leadership

BASIC SCIENCE DIVISION CHIEFS

Radiology research reflects a deep and growing commitment to elucidating the underlying physiologic processes of disease, developing new methodologies and therapies to improve patients' lives, and to educating and training the next generation of interdisciplinary scientists. Faculty leading sponsored projects in the Department include experts in the fields of magnetic resonance imaging (MRI), ultrasound, X-ray, computed tomography (CT), positron emission tomography (PET), single-photon emission computed tomography (SPECT), spectroscopy, chemistry, molecular imaging, genomics/proteomics, bioinformatics, and computational sciences.

Researchers in the department include faculty members, instructors, visiting scholars, staff scientists, postdoctoral fellows, and graduate and undergraduate students who actively collaborate with colleagues across Stanford, at affiliated institutions, other research institutions, industry partners, and foundations. Our collaborations span broadly across the country and around the world.

CANARY CENTER AT STANFORD FOR CANCER EARLY DETECTION



SANJIV SAM GAMBHIR, MD, PHD
Professor of Radiology
(650) 725-2309
sgambhir@

Division Chief, Canary Center

The Canary Center at Stanford for Cancer Early Detection is a world-class research center dedicated to fundamental discovery and translation of novel cancer early detection and prognostication strategies. The Division Chief directs all programmatic and scientific needs of the Canary Center by bringing together scientists, physicians, and engineers to think outside the box and advance the discovery and implementation of minimally invasive diagnostic and imaging tests for the detection and prognostication of cancers at early, curable stages. The Canary Center is the first in the world to integrate in vivo and in vitro diagnostics research to deliver these tests, by housing state-of-the-art facilities and collaborative research programs in molecular imaging, proteomics, chemistry, cell and molecular biology, and bioinformatics. The Division Chief works closely with the Canary Center Deputy Directors, Drs. Stephanie van de Ven and Mark Stolowitz. Dr. van de Ven develops and supports research and educational programs, internal and external partnerships, strategic program plans, community engagement, and funding efforts related to the Canary Center. Dr. Stolowitz supports Canary Center operational aspects, including management of shared resource facilities, laboratory space, and administrative associates.

Co-Director, Cancer Imaging and Early Detection Program

HEIKE DALDRUP-LINK, MD
Professor of Radiology
(650) 723-8996
heiked@

The Director, Dr. Sam Gambhir and Co-Director, Dr. Heike Daldrup-Link of the Cancer Imaging and Early Detection Program oversee all research activities within the Department related to pre-clinical and clinical cancer imaging research.

BASIC SCIENCE DIVISION CHIEFS (continued)

INTEGRATIVE BIOMEDICAL IMAGING INFORMATICS AT STANFORD (IBIIS)

The Co-Division Chiefs of IBIIS co-lead information sciences in imaging in the Department. This includes strategic planning for the division, mentoring junior faculty, and supervising a developing biorepository for expanded research in imaging and molecular-data integration.

Co-Division Chief, IBIIS



SANDY NAPEL, PHD
Professor of Radiology
(650) 725-8027
snapel@

Co-Division Chief, IBIIS



SYLVIA PLEVritis, PHD
Professor of Radiology
(650) 498-5261
sylvia.plevritis@

MOLECULAR IMAGING PROGRAM AT STANFORD (MIPS)

Division Chief, MIPS



SANJIV SAM GAMBHIR, MD, PHD
Professor of Radiology
(650) 725-2309
sgambhir@

The Division Chief of the Molecular Imaging Program at Stanford (MIPS) directs all programmatic and scientific needs of the interdisciplinary MIPS program by bringing together scientists and physicians in developing state-of-the-art imaging technology and molecular probes for studying intact biological systems. Multimodality imaging technologies under development and investigation within MIPS include PET, SPECT, CT, MRI, MPI, MRS, optical bioluminescence, optical fluorescence, ultrasound, and photoacoustic imaging. Examples of active research areas are cancer, microbiology/immunology, cardiovascular, neurology, stem cell biology, nanobiotechnology, molecular probe development, developmental biology and pharmacology, and quantitation and visualization. The Division Chief works closely with the Deputy Director of MIPS (Dr. Gunilla Jacobson), who supports the scientific research programs, translation of new tools to the clinic, strategic program planning, industry collaborations, education and community outreach, and funding efforts related to MIPS.

Director, Translational Pediatric Molecular Imaging



HEIKE DALDRUP-LINK, MD
Professor of Radiology
(650) 723-8996
heiked@

The Division Chief, Dr. Sam Gambhir, and Director Translational Pediatric Molecular Imaging, Dr. Heike Daldrup-Link, oversee research activities within the Department related to pre-clinical and clinical pediatric molecular imaging research to combine new discoveries at the intersection of cell biology, nanomedicine and medical imaging to develop novel imaging solutions that are tailored to specific needs of pediatric patients.

Director, Cyclotron Radiochemistry



FREDERICK CHIN, PHD
Assistant Professor of
Radiology
(650) 725-4182
chinf@

The Director of Cyclotron & Radiochemistry oversees the programmatic objectives and daily operation of the department's Cyclotron and Radiochemistry Facilities, including the Main Cyclotron and Radiochemistry Facility. He supervises the program development of preclinical and clinical PET/SPECT probes for molecular imaging at Stanford. Dr. Fred Chin works with regulatory entities (e.g., FDA, RDRC, IRB) and leads translational efforts of novel and promising radiotracers for oncology, neuropsychiatry, and cardiology applications at Stanford.

BASIC SCIENCE DIVISION CHIEFS (continued)

PRECISION HEALTH AND INTEGRATED DIAGNOSTICS CENTER AT STANFORD (PHIND)



SANJIV SAM GAMBHIR, MD, PHD
Professor of Radiology
(650) 725-2309
sgambhir@

Division Chief, PHIND

The Director of the Precision Health and Integrated Diagnostics Center at Stanford (PHIND) directs all programmatic and scientific needs of the PHIND program by bringing together scientists from diverse interdisciplinary backgrounds from all across the Stanford campus to work on the emerging field of precision health. PHIND is developing approaches such as wearables/implantables, data analytics, biomarkers to measure the transitions from health to disease, and precision health economics. Active research using these approaches and spanning multiple disease areas including cancer, cardiovascular, and mental/neurological disease is underway. The Director of PHIND works closely with the Deputy Director of PHIND, Dr. Ryan Spitler, who supports the scientific research programs, clinical translation and spin-off of new approaches, strategic program planning, industry and other outside collaborations, education and community outreach, and funding efforts related to PHIND.

RADIOLOGICAL SCIENCES LABORATORY (RSL)

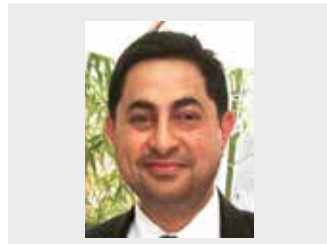


KIM BUTTS PAULY, PHD
Professor of Radiology
(650) 725-8551
kimbutts@

Division Chief, RSL

The Radiological Sciences Laboratory presently comprises nine faculty and approximately 60 graduate and postdoctoral trainees, research staff, and others devoted to advancing imaging technology for diagnostic, basic science, and therapeutic applications within the department and in collaborations across campus and beyond. It's research foci include the imaging modalities of MRI, CT, X-ray, PET, ultrasound imaging and MR imaging-guided focused ultrasound therapy. In addition to its basic and applied research, the RSL administers the Lucas MRI Service Center, which is in its 25th year of operation offering research scan capabilities to the local and extended community. The Division Chief of RSL (Dr. Butts Pauly) oversees section-wide activities including strategic planning, faculty recruitment, the TBI2 Training grant, and the RSL retreat and seminar.

VA PALO ALTO HEALTH CARE SYSTEM (VAPAHCS)



PAYAM MASSABAND, MD
Clinical Associate
Professor of Radiology
(650) 493-5000
payam@

Associate Chair, VAPAHCS / Division Chief of Radiology, VAPAHCS

The Associate Chair of VAPAHCS/Division Chief of Radiology, VAPAHCS provides oversight and leadership of the clinical, teaching, and research missions of the VA Radiology Department. Dr. Payam Massaband at the VA manages delivery of imaging to the patients across the Palo Alto Health Care System, including five outlying clinics. The VA faculty, administrative, and technologist staff report to the Division Chief of Radiology VAPAHCS (Dr. Payam Massaband). Dr. Payam Massaband helps coordinate the efforts of the Stanford Radiology Department with respect to the clinical, educational, and research missions where they intersect with the VA Palo Alto Health Care System.

Director, Diagnostic Radiology, VAPAHCS



CHARLES LAU, MD, MBA
Clinical Associate
Professor of Radiology
(650) 725-5202
lauc@

Division Chief, Interventional Radiology, VAPAHCS



RAJESH SHAH, MD
Clinical Assistant
Professor of Radiology
(650) 723-0728
rajshah@

Director, Radiology Research, VAPAHCS



DANIEL ENNIS, PHD
Associate Professor of
Radiology
dbe@



GEORGE SEGALL, MD
Professor of Radiology
(650) 858-3945
george.segall@va.gov

Division Chief, Nuclear Medicine, VAPAHCS

The Division Chief of Nuclear Medicine at the VAPAHCS oversees the trainees in the Nuclear Medicine Service at the VA, as well as clinical services at the VA, and the interactions between the VA and Stanford Nuclear Medicine.

RESEARCH ADMINISTRATION



BRIAN HARGREAVES, PHD
Professor of Radiology
(650) 498-5368
bah@

Associate Chair, Research

The Associate Chair of Research develops programs to increase research collaboration and interdisciplinary efforts between the research and clinical divisions. This includes assisting the Radiology Interest Groups in areas such as machine learning, organ system, and neurosciences, as well as supervising and directing deputy directors of each research division/program. The Associate Chair of Research also evaluates areas of potential investment for internal research funding, and works with the industry on research collaborations to increase industry research funding. Working with the Director of Basic Science Education (Dr. Daniel Spielman), he also promotes and develops graduate education programs.



DANIEL SPIELMAN, PHD
Professor of Radiology
(650) 723-8697
spielman@

Director, Basic Science Education

The Director of Basic Science Education works with the Department Chair (Dr. Sam Gambhir), the Vice Chair of Education and Clinical Operations (Dr. David Larson), the Associate Chair of Research and Administration (Dr. Garry Gold), and the Associate Chair of Education (Dr. Chris Beaulieu) on all aspects of the education of trainees pursuing scientific careers. This includes graduate students, post-doctoral students, instructors, and research scientists.



BRUCE DANIEL, MD
Professor of Radiology
(650) 725-1812
bdaniel@

Director, IMMERS

The Director of Incubator for Medical Mixed and Extended Reality at Stanford (IMMERS) oversees labs dedicated to conceptualizing and prototyping augmented reality solutions, directs a group of faculty, staff and trainees working in this area, and leads a graduate project course aiming to familiarize students with AR technology.



CURTIS LANGLOTZ, MD, PHD
Professor of Radiology
(650) 498-4797
langlotz@

Director, Artificial Intelligence in Medicine and Imaging (AIMI)

Stanford has established the AIMI Center to develop, evaluate, and disseminate artificial intelligence systems to benefit patients. The Center conducts research that solves clinically important imaging problems using machine learning and other artificial intelligence techniques.



BHAVIK PATEL, MD, MBA
Assistant Professor of
Radiology
(650) 723-8463
bhavikp@

Director, Clinical Trials

The Director of Clinical Trials oversees the operations of the research PET/CT program. This includes collaborating with the Office of Medical Development on potential funding resources for molecular imaging research purposes. The Director of Clinical Trials also oversees and manages the program's existing grants, guides research projects, and secures institutional approvals associated with Center grants.



DANIEL SPIELMAN, PHD
Professor of Radiology
(650) 723-8697
spielman@

Director, Statistics Core

The Director of Statistics Core manages the department's two biostatisticians (Jarret Rosenberg and Tie Liang) to ensure timely statistical support for all members of the department in study design, data analysis, and grant and manuscript preparation.



DOMINIK FLEISCHMANN, MD
Professor of Radiology
(650) 723-7647
d.fleischmann@

Co-Director, 3DQ Lab

The Director of 3DQ Lab envisions and directs implementation of solutions that provide clinically relevant CT and MR image analysis. This includes collaborating with many clinical divisions to optimize and deliver 3D and quantitative imaging workflows, regularly evaluating efficiency and effectiveness and hypothesizing future needs. He also strategically invests in imaging analysis platforms to enhance the workflows within 3DQ Lab, promotes capabilities for research, and extends such capabilities to Stanford Health Care to enhance health care providers' access to the latest technology.



SANDY NAPEL, PHD
Professor of Radiology
(650) 725-8027
snapel@

Co-Director, 3DQ Lab

The Co-Director of 3DQ Lab directs the management of information systems, facilities planning, and staffing. This includes working closely with management teams to oversee the technical ecosystem, ensuring facilities are safe and appropriate, and verifying appropriate staffing configurations. He also works closely with the Clinical Directors to strategically invest in research that improves image analyses.

OTHER ADMINISTRATION



GARRY GOLD, MD
Professor of Radiology
(650) 724-0361
gold@

Chair, Compensation Committee

The Chair of the Compensation Committee discusses the Department compensation plan and its elements, making recommendations to the Chair (Dr. Sam Gambhir) for possible changes or additional elements to include. Overall compensation and changes to the plan are closely regulated by the School of Medicine.



BRIAN HARGREAVES, PHD
Professor of Radiology
(650) 498-5368
bah@

Chair, Space Committee

The Chair of the Department Space Committee oversees Department space allocation, working closely with staff and Division Chiefs.



ROBERT HERFKENS, MD
Professor of Radiology
(650) 723-4733
herfkens@

Associate Chair, Clinical Technology

The Associate Chair of Clinical Technology is responsible for overseeing construction projects and equipment purchases for the Department of Radiology. This includes close cooperation with the design and construction office and hospital management to provide critical input from clinical services into project management. Dr. Herfkens supervises the selection and negotiation of equipment. This includes organizing and serving as Chair of the Equipment Selection committee and making recommendations for the Department. His other duties include activities and operations planning for projects, including the new Stanford Hospital.



BROOKE JEFFREY, MD
Professor of Radiology
(650) 723-8310
bjeffrey@

Associate Chair, Academic Affairs

The Associate Chair of Academic Affairs oversees the Department's Appointment and Promotion (A&P) Committee and the Clinician Educator (CE) and Adjunct Clinical Faculty (ACF) Review Committee. These committees make recommendations to the Chair (Dr. Sam Ghambhir). He works closely with the A&P Committee Chairs (Dr. Garry Gold and Dr. Sandy Napel) as well as the Chair of the CE/ACF Review Committee (Dr. Volney Van Dalsem).

APPOINTMENT AND PROMOTION COMMITTEE

The Appointment and Promotion Committee (A&P) reviews members of the professoriate for appointment, reappointment, and promotion. The Clinician Educator (CE) and Adjunct Clinical Faculty (ACF) Review Committee reviews CE and ACF members in the Department for appointment, reappointment, and promotion. The Committees make recommendations to the Chair (Dr. Sam Gambhir). Deliberations of the committee and individual actions are confidential.

Co-Chair, A&P Committee



GARRY GOLD, MD
Professor of Radiology
(650) 724-0361
gold@

Co-Chair, A&P Committee



SANDY NAPEL, PHD
Professor of Radiology
(650) 725-8027
snapel@

Chair CE, ACF Committee



VOLNEY (VOL) VAN DALSEM, MD
Clinical Professor of Radiology
(650) 721-3952
vandal3@

